

MARK CURRENT
VERSION

FAB 3058A REV 3

RL1212PROBE


LB3058A


1A

10A

50A

100A

 **ANALOG
DEVICES**

 **POWER BY
LINEAR™**

R8

R30

R21

R12

R18

R7

R28

R20

R11

R16

R6

R26

R19

R9

R14

+

+

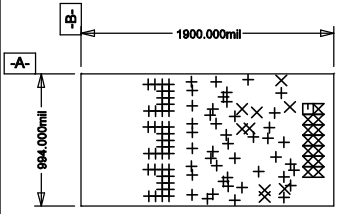
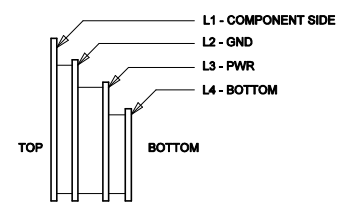
+

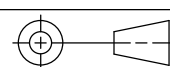


+

www.analog.com

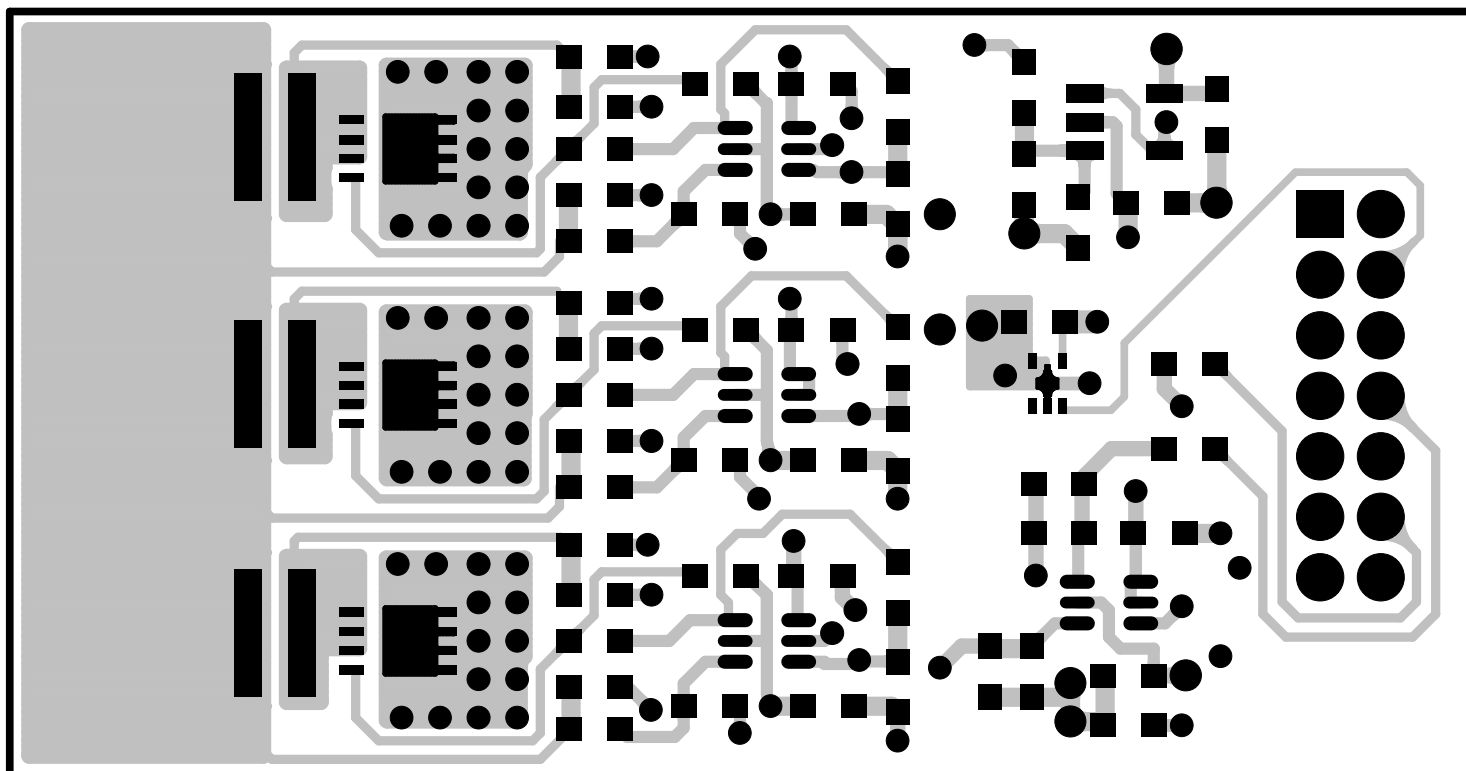
ANALOG DEVICES INC.

LB3058A REV 3 BOTTOM ASSEMBLY
09/24/20 BTTM SILKSCREEN

<p>ADI CONFIDENTIAL - For Customer Use Only</p> <div style="display: flex; justify-content: space-around; align-items: center;"> <div style="text-align: center;">  <p>TOP COMPONENT SIDE SHOWN L1-COMPONENT SIDE</p> </div> <div style="text-align: center;">  <p>LAYER CONSTRUCTION</p> </div> </div> <table border="1" style="margin-top: 20px; width: 100%; border-collapse: collapse;"> <thead> <tr> <th>SIZE</th> <th>QTY</th> <th>SYM</th> <th>PLATED</th> <th>TOL</th> </tr> </thead> <tbody> <tr> <td>16</td> <td>86</td> <td>+</td> <td>YES</td> <td>+/-0.08</td> </tr> <tr> <td>20</td> <td>9</td> <td>X</td> <td>YES</td> <td>+/-0.08</td> </tr> <tr> <td>35</td> <td>1</td> <td>□</td> <td>YES</td> <td>+/-0.08</td> </tr> <tr> <td>40</td> <td>13</td> <td>⊗</td> <td>YES</td> <td>+/-0.08</td> </tr> </tbody> </table>		SIZE	QTY	SYM	PLATED	TOL	16	86	+	YES	+/-0.08	20	9	X	YES	+/-0.08	35	1	□	YES	+/-0.08	40	13	⊗	YES	+/-0.08	<table border="1" style="width: 100%; border-collapse: collapse;"> <tr> <td colspan="2">DWG NO LB3058A</td> <td>SH 1</td> <td>REV 3</td> </tr> <tr> <td colspan="4" style="text-align: center;">REVISION HISTORY</td> </tr> <tr> <td>ECO</td> <td>REV</td> <td>DESCRIPTION</td> <td>DATE</td> </tr> <tr> <td></td> <td>3</td> <td>PROTO</td> <td>09/24/20</td> </tr> <tr> <td colspan="4"> <p>NOTES: UNLESS OTHERWISE SPECIFIED,</p> <ol style="list-style-type: none"> ARTWORK P/N LB3058A REV3. FAB PER IPC-A-600 PCB SHALL MEET RoHS COMPLIANCE. MATERIAL: <ul style="list-style-type: none"> A. LAMINATE: LEAD FREE COMPLIANT, ISOLA FR-370HR OR EQUIVALENT. FLAMMABILITY RATING: 94 V-2 MINIMUM . B. THICKNESS: .080 +/- .005 C. CLAD: 2 OZ. (50um) EXTERNAL LAYERS. 1 OZ. (25um) COPPER ON ALL INTERNAL LAYERS. FINISH: <ul style="list-style-type: none"> A. COATING: SOLDERMASK OVER BARE COPPER, COLOR, BLUE LPI. B. PLATING: GOLD IMMERSION BOTH SIDES. C. SILKSCREEN: BOTH SIDES WITH WHITE NON-CONDUCTIVE INK. TOLERANCES: <ul style="list-style-type: none"> A. WARPAGE: (0.005) MAX. ALONG THE LONGEST DIAG. AS PER IPC-TM650 METHOD 2.4.22. B. ETCHING: +0.002, -0.002 OF MASTER PATTERN. C. REGISTRATION: 0.004 MAX. D. MASK THICKNESS: 0.001 MIN., 0.004 MAX. E. HOLE PLATING: 22um +/- 3um. SIZE: <ul style="list-style-type: none"> A. CUT TO DIMENSIONS AND TOLERANCES SHOWN. 0.00 ARE PRIMARY DATUMS. HOLE DIAMETERS ARE POST-PLATED SIZES. DEBURR AND BREAK ALL SHARP EDGES. DO NOT ALTER ARTWORK e.g. TO ADD LOGO OR DATE CODE. </td> </tr> </table>		DWG NO LB3058A		SH 1	REV 3	REVISION HISTORY				ECO	REV	DESCRIPTION	DATE		3	PROTO	09/24/20	<p>NOTES: UNLESS OTHERWISE SPECIFIED,</p> <ol style="list-style-type: none"> ARTWORK P/N LB3058A REV3. FAB PER IPC-A-600 PCB SHALL MEET RoHS COMPLIANCE. MATERIAL: <ul style="list-style-type: none"> A. LAMINATE: LEAD FREE COMPLIANT, ISOLA FR-370HR OR EQUIVALENT. FLAMMABILITY RATING: 94 V-2 MINIMUM . B. THICKNESS: .080 +/- .005 C. CLAD: 2 OZ. (50um) EXTERNAL LAYERS. 1 OZ. (25um) COPPER ON ALL INTERNAL LAYERS. FINISH: <ul style="list-style-type: none"> A. COATING: SOLDERMASK OVER BARE COPPER, COLOR, BLUE LPI. B. PLATING: GOLD IMMERSION BOTH SIDES. C. SILKSCREEN: BOTH SIDES WITH WHITE NON-CONDUCTIVE INK. TOLERANCES: <ul style="list-style-type: none"> A. WARPAGE: (0.005) MAX. ALONG THE LONGEST DIAG. AS PER IPC-TM650 METHOD 2.4.22. B. ETCHING: +0.002, -0.002 OF MASTER PATTERN. C. REGISTRATION: 0.004 MAX. D. MASK THICKNESS: 0.001 MIN., 0.004 MAX. E. HOLE PLATING: 22um +/- 3um. SIZE: <ul style="list-style-type: none"> A. CUT TO DIMENSIONS AND TOLERANCES SHOWN. 0.00 ARE PRIMARY DATUMS. HOLE DIAMETERS ARE POST-PLATED SIZES. DEBURR AND BREAK ALL SHARP EDGES. DO NOT ALTER ARTWORK e.g. TO ADD LOGO OR DATE CODE. 			
SIZE	QTY	SYM	PLATED	TOL																																												
16	86	+	YES	+/-0.08																																												
20	9	X	YES	+/-0.08																																												
35	1	□	YES	+/-0.08																																												
40	13	⊗	YES	+/-0.08																																												
DWG NO LB3058A		SH 1	REV 3																																													
REVISION HISTORY																																																
ECO	REV	DESCRIPTION	DATE																																													
	3	PROTO	09/24/20																																													
<p>NOTES: UNLESS OTHERWISE SPECIFIED,</p> <ol style="list-style-type: none"> ARTWORK P/N LB3058A REV3. FAB PER IPC-A-600 PCB SHALL MEET RoHS COMPLIANCE. MATERIAL: <ul style="list-style-type: none"> A. LAMINATE: LEAD FREE COMPLIANT, ISOLA FR-370HR OR EQUIVALENT. FLAMMABILITY RATING: 94 V-2 MINIMUM . B. THICKNESS: .080 +/- .005 C. CLAD: 2 OZ. (50um) EXTERNAL LAYERS. 1 OZ. (25um) COPPER ON ALL INTERNAL LAYERS. FINISH: <ul style="list-style-type: none"> A. COATING: SOLDERMASK OVER BARE COPPER, COLOR, BLUE LPI. B. PLATING: GOLD IMMERSION BOTH SIDES. C. SILKSCREEN: BOTH SIDES WITH WHITE NON-CONDUCTIVE INK. TOLERANCES: <ul style="list-style-type: none"> A. WARPAGE: (0.005) MAX. ALONG THE LONGEST DIAG. AS PER IPC-TM650 METHOD 2.4.22. B. ETCHING: +0.002, -0.002 OF MASTER PATTERN. C. REGISTRATION: 0.004 MAX. D. MASK THICKNESS: 0.001 MIN., 0.004 MAX. E. HOLE PLATING: 22um +/- 3um. SIZE: <ul style="list-style-type: none"> A. CUT TO DIMENSIONS AND TOLERANCES SHOWN. 0.00 ARE PRIMARY DATUMS. HOLE DIAMETERS ARE POST-PLATED SIZES. DEBURR AND BREAK ALL SHARP EDGES. DO NOT ALTER ARTWORK e.g. TO ADD LOGO OR DATE CODE. 																																																

<p>UNLESS OTHERWISE SPECIFIED DIMENSIONS ARE IN INCHES TOLERANCES ON ANGLE ± 1°</p> <p>JXX ± 0.01 JXXX ± 0.005</p> <p>THIRD ANGLE PROJECTION</p> <div style="text-align: center;">  </div> <p>DO NOT SCALE DRAWING</p>		<p>CONTRACT NO.</p> <hr/> <p>APPROVALS</p> <p>DRAWN <i>SW</i></p> <p>CHECKED</p> <p>APPROVED <i>SW</i></p> <p>DESIGNED BY</p>		<p>DATE</p> <p>01/08/20</p> <p>05/12/20</p>		<div style="display: flex; align-items: center;">   <div style="margin-left: 10px;"> <p>2555 Augustine Drive Santa Clara, CA 95054 www.analog.com 1-800-282-5643 (toll free)</p> </div> </div> <p>TITLE</p> <p style="font-size: 1.2em; font-weight: bold;">PCB FAB, RL1212PROBE</p>					
				<p>SIZE A</p>		<p>CAGE CODE</p>		<p>DWG NO. LB3058A</p>		<p>REV 3</p>	
				<p>SCALE 1/1</p>		<p>FILENAME: LB3058A-3.PCB</p>		<p>SHEET 1 OF 1</p>			

LB3058A-3.pcb - Thu Sep 24 16:17:09 2020

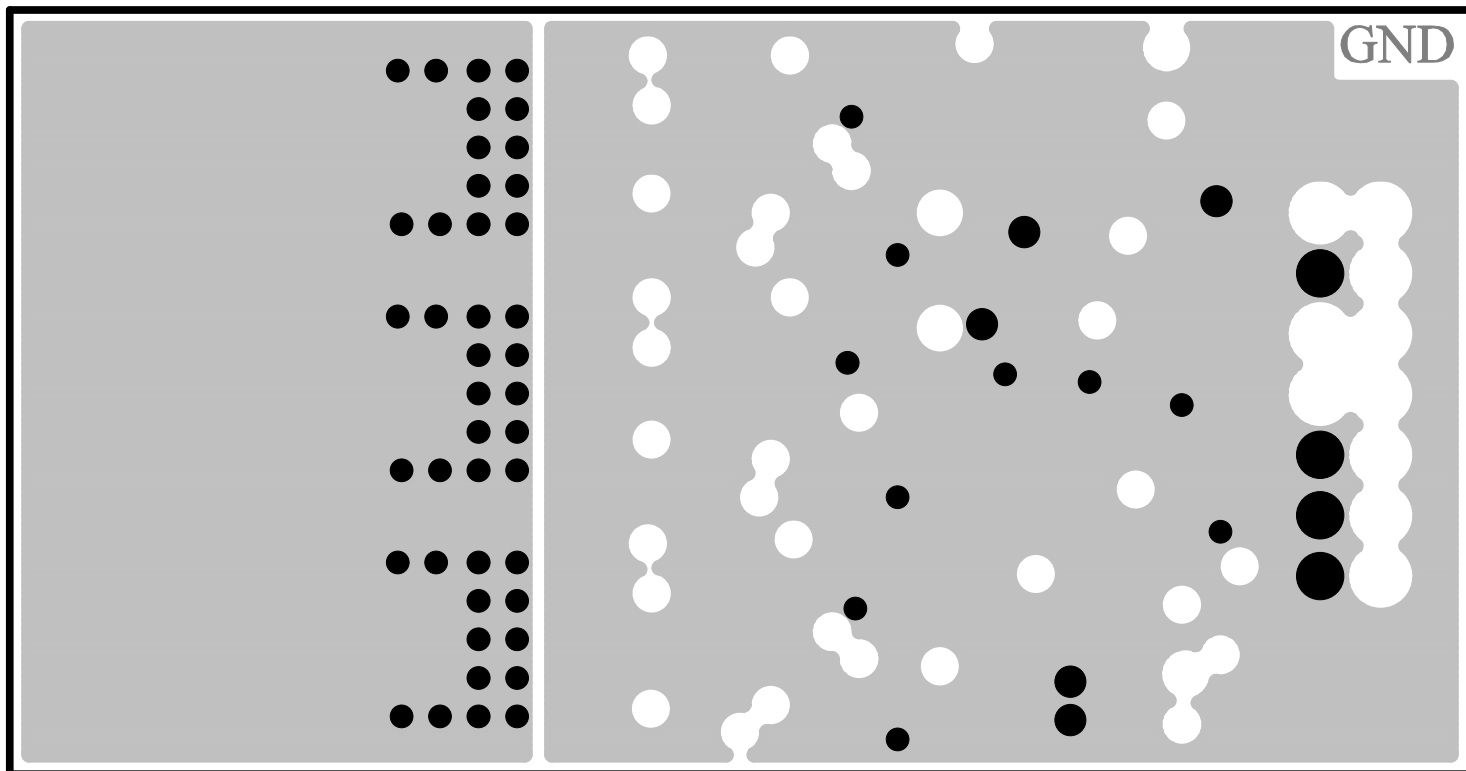


ANALOG DEVICES INC.

LB3058A REV 3

L1-COMPONENT SIDE

09/24/20

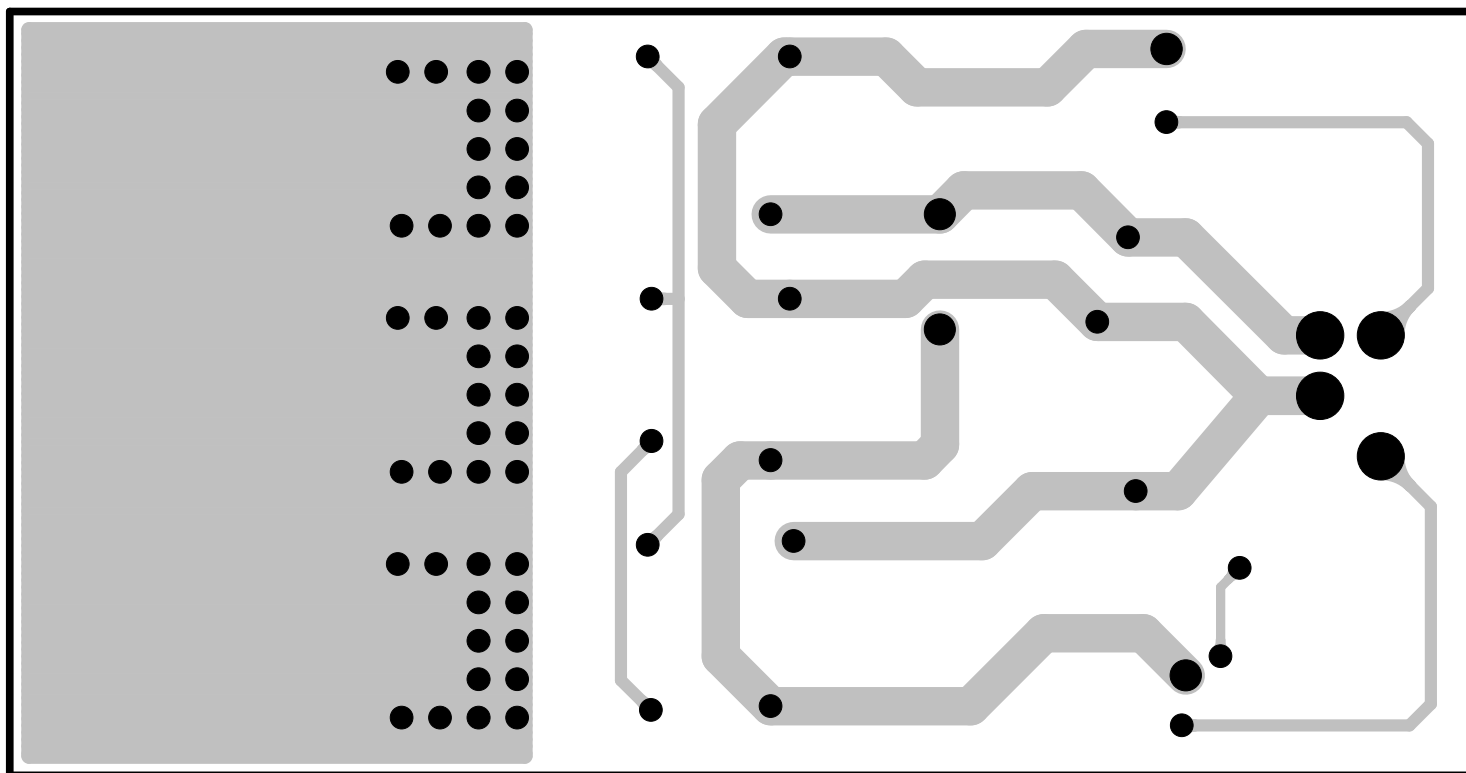


ANALOG DEVICES INC.

LB3058A REV 3

09/24/20

L2-GND LAYER

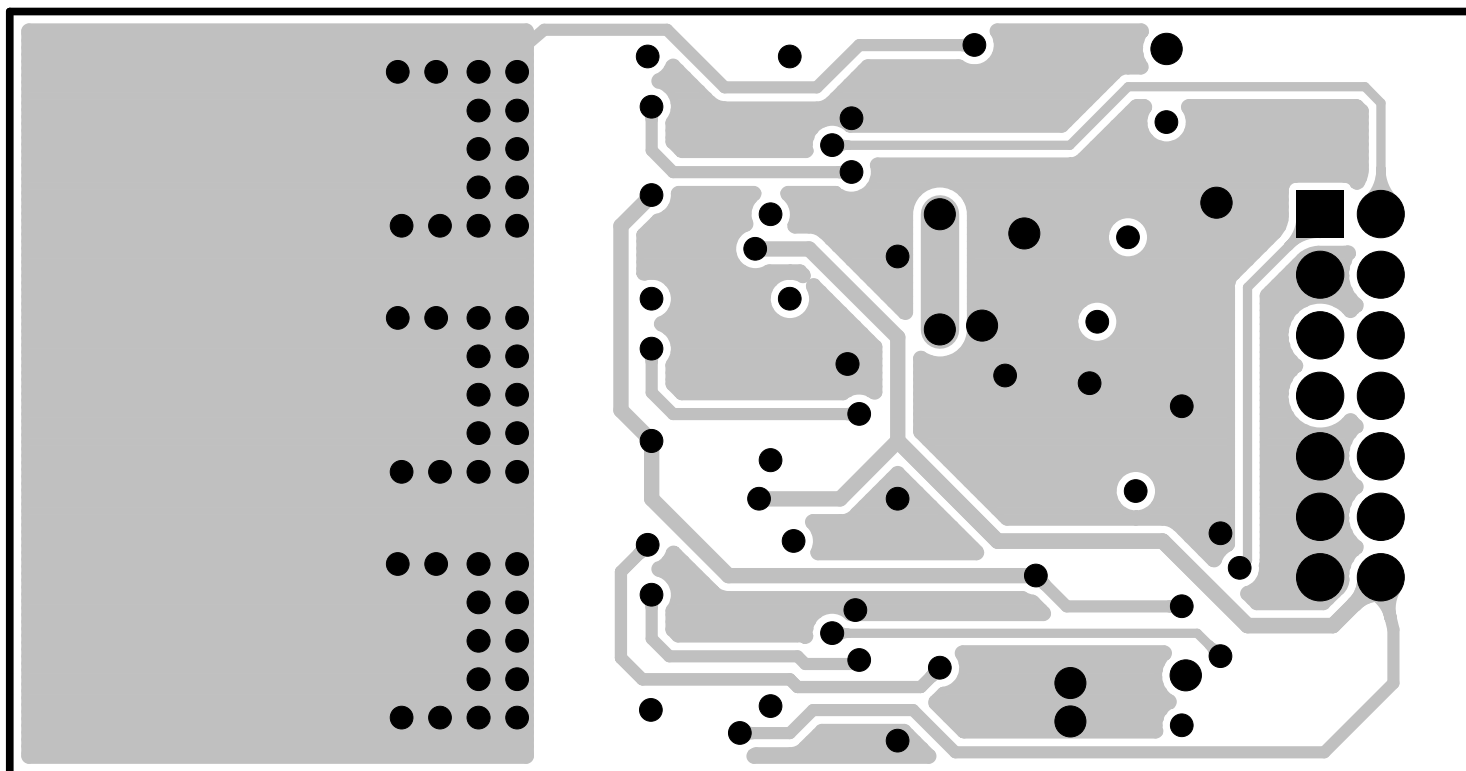


ANALOG DEVICES INC.

LB3058A REV 3

LB3058A REV 3

09/24/20



ANALOG DEVICES INC.

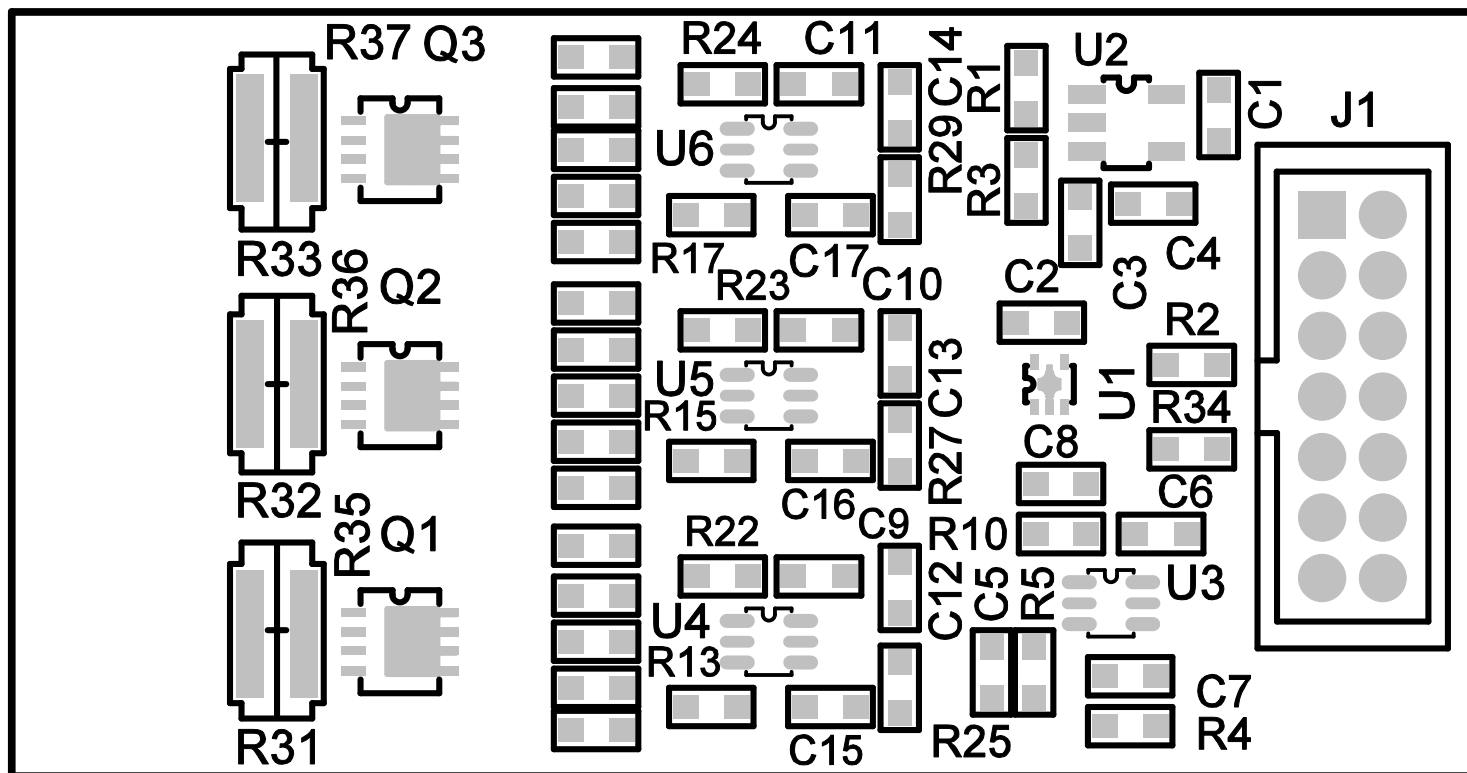
LB3058A REV 3

09/24/20

L4-BOTTOM LAYER

NOTES: UNLESS OTHERWISE SPECIFIED

1. WORKMANSHIP SHALL BE IN ACCORDANCE WITH IPC-A-610.
2. CHECK CURRENT VERSION ON THE BACK SIDE WHERE SHOWN.



ANALOG DEVICES INC.

LB3058A REV 3
09/24/20

TOP SILKSCREEN
TOP ASSEMBLY